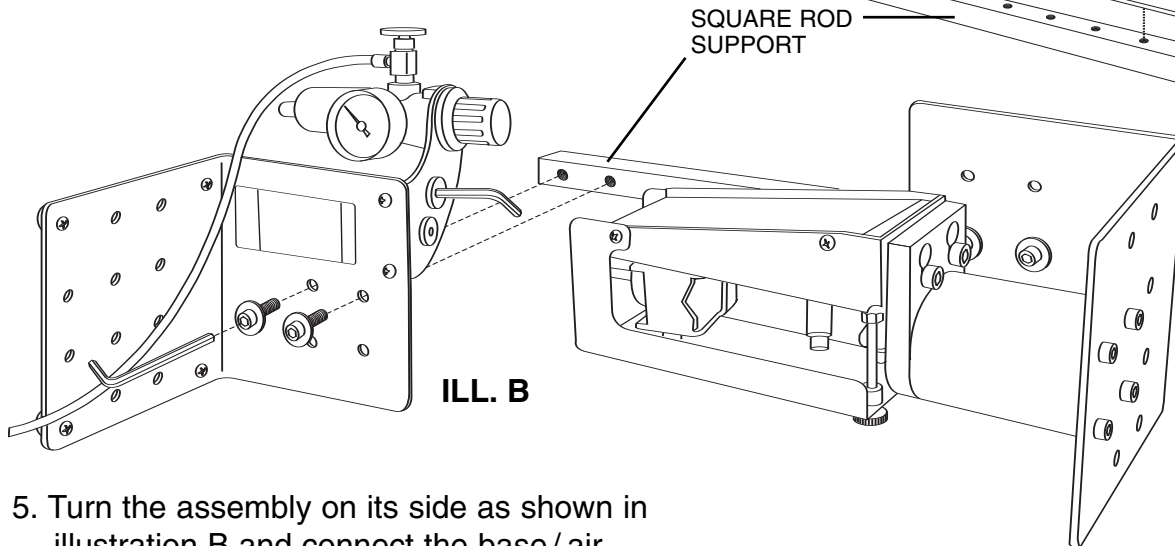
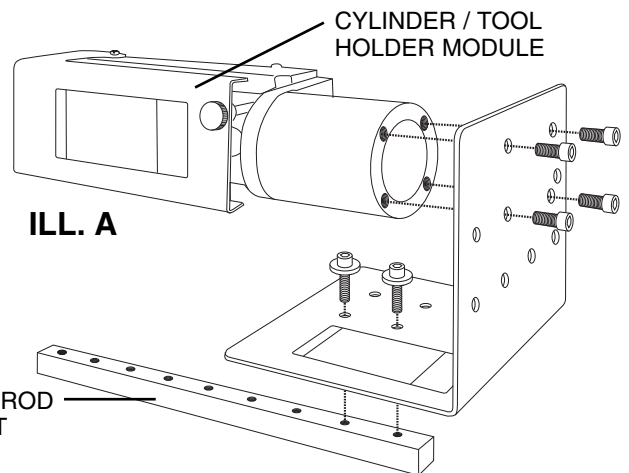
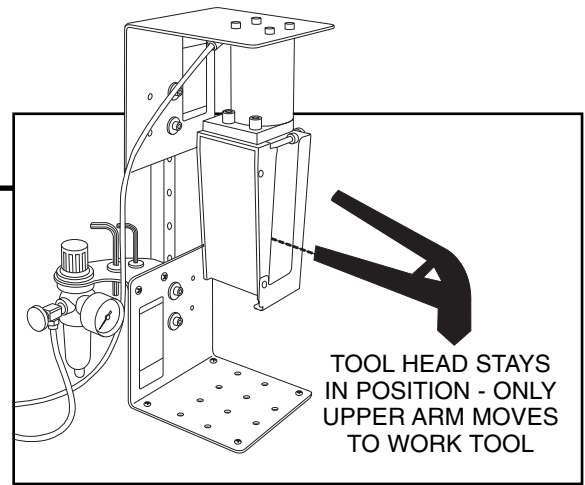


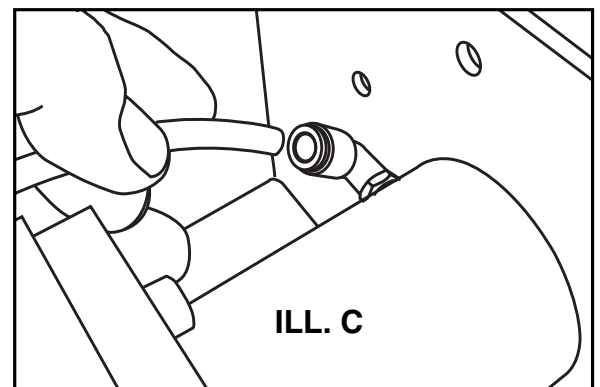
HANDWORKER® INVERTER KIT

ASSEMBLY INSTRUCTIONS

1. Disconnect the air supply from the cylinder.
2. Detach the cylinder/tool holder module by removing the 4 allen head bolts located on the bottom of the base.
3. Attach the square rod support to the INVERTER base (both found in the inverter kit) as shown in illustration A. **NOTE:** For stability we recommend using the lowest height needed to operate the tool you desire.
4. Mount the cylinder/tool holder module to the INVERTER base using the same 4 bolts you removed it with. (see ILL A) Attach the cylinder so that the tool will be oriented in the working position desired... straight out, left or right.



5. Turn the assembly on its side as shown in illustration B and connect the base/ air regulator assembly to the square support rod.
6. Connect the air supply to the air cylinder. Simply insert end of hose into the orange ring connector. (see illustration C)
7. Stand unit upright. For stability, we recommend clamping or bolting the unit to the table top. Insert the hand tool you desire to use.



handworker.com

GLENDO
CORPORATION

900 Overlander Road • Emporia, KS 66801
620-343-1084 • Fax: 620-343-9640 • e-mail: handworker@handworker.com

LIT #128